

COUNTDOWN TO TCAP!



Instructional days left
before the TCAP begins
on April 15th!



THE TURNAROUND DIGEST

Review

VOLUME 2, ISSUE 17 • DECEMBER 8, 2023

DR. THOMAS D. ROGERS, ASSISTANT SUPERINTENDENT - 2022-2023 BROAD FELLOW-YALE SCHOOL OF MANAGEMENT



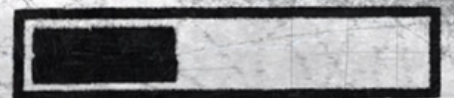
Rendering of the New Frayser High School . . . See the Future!!

FROM THE DESK OF

Dr. Thomas D. Rogers

To accelerate improvement as a turnaround instructional leader, a multi-faceted approach is essential. First and foremost, fostering a culture of collaboration and open communication among educators can significantly enhance the exchange of innovative teaching strategies. Regularly assessing and addressing individual teacher needs, tailoring professional development accordingly, and providing constructive feedback are pivotal components of the school improvement process. Additionally, staying abreast of the latest educational research and technology trends ensures that instructional methods remain cutting-edge. Emphasizing data-driven decision-making enables swift identification of areas for improvement and the implementation of targeted interventions. Lastly, cultivating a positive and supportive school environment that encourages risk-taking and continuous learning is fundamental to propelling the entire educational community toward sustained growth.

GET 1%
BETTER
EVERY DAY



NOW LOADING...

LEADERSHIP

DR. DEBRA STANFORD, ZONE 9 ILD



The Forgotten Element of Instructional Leadership: Grading

Getting the school team coordinated on grading and reporting policies—and the purpose of grading—is too often overlooked in instructional leadership.



The primary purpose of the grading system is to clearly, accurately, consistently, and fairly communicate learning progress and achievement to students, families, postsecondary institutions, and prospective employers. However, leaders must ensure teachers fully understand the grading policies and practices adopted by the District and monitor the implementation.



Click the image on the left to access the article *The Forgotten Element of Instructional Leadership: Grading*.

IN THE SPOTLIGHT

PRINCIPAL WILLIE BOLDEN

Principal Willie Bolden was recently featured in the Tennessee Principals Association's *Monthly Membership Update* for the great work he is leading at Woodstock Middle. Kudos for making the IZone and Memphis-Shelby County Schools families proud!

TPA Membership Spotlight - Mr. Willie Bolden



TPA Members across the state are doing incredible work everyday and we want to be sure to highlight the great things that are happening in our schools, as well as, how being a member has supported, empowered and connected you professionally! For this month, we are excited to introduce you to Mr. Willie Bolden, principal of Woodstock Middle School in Shelby County Schools.

Mr. Bolden states, "A benefit of being a member of TPA is getting to learn from knowledgeable colleagues. Last year while attending the TPA conference in Dollywood, I heard Dr. Brittenum present on the power of listening. It seems like a relatively minor subject, but his powerful presentation helped me to immediately return to my

building and implement strategies that showed my team that I hear them. Showing my staff that I'm listening has improved relationships and the culture of my school."

Thank you, Mr. Bolden, for your service to the Shelby County community, your students, and to our profession - we are proud to have you as a colleague and member of our organization!



TPA December 2023 Membership Update



K-8 ELA

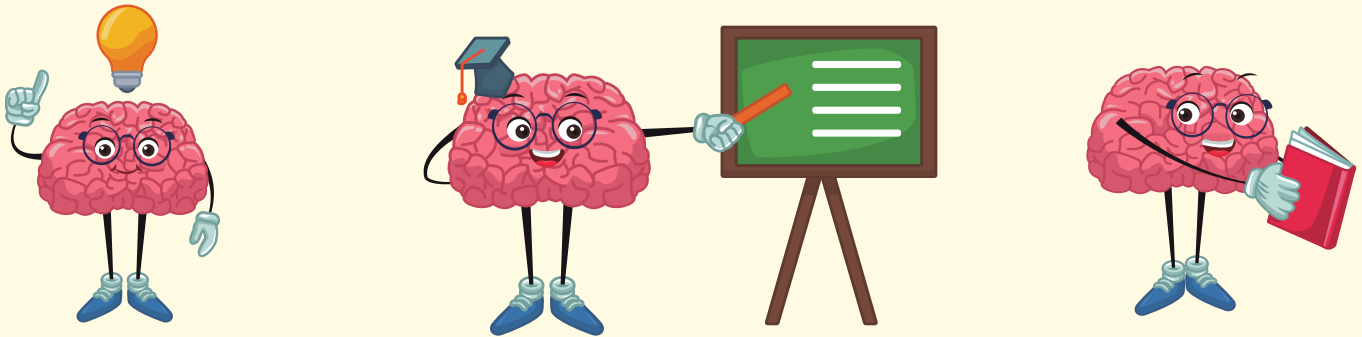
DR. MATARA HARRIS, MANAGER

Greetings, Great Educators!

Brain-based learning involves teachers creating conditions that increase student motivation, engagement, and long-term retention by tapping into the natural ways the brain receives, processes, and stores information. This approach can be applied to classroom teaching methods, lesson planning, curriculum design, and any other educational engagement. Planning and delivery grounded in the latest research on the science of learning will result in quality brain-based learning.

For some useful suggestions on how to incorporate brain-based teaching and learning practices into your classroom, please see the link below.

[10 Most Effective Tips for Using Brain-Based Teaching & Learning](#)



K-8 MATH

ROMOND ARNOLD, MANAGER

Hello IZone 3.0 Mathematicians,

To strengthen students' understanding and application of proportional reasoning in a K-8 Mathematics classroom while also incorporating error analysis, teachers can use the following specific strategies:

1. Concrete Models: Start with concrete examples using physical models, such as proportional manipulatives (e.g., blocks, strips) to help students visualize and understand ratios and proportions.
2. Visual Representations: Use visual aids like bar models or double number lines to illustrate proportional relationships. Encourage students to draw their own representations for problem-solving.
3. Real-World Scenarios: Present proportional reasoning problems in real-life contexts, such as recipes, maps, or scale drawings, to make the concept more relatable and practical.
4. Comparing Ratios: Have students compare different ratios and proportions to understand the relationships between them. This could include activities like ratio tables or making equivalent ratios.

[Click here](#) to see examples 5 -10.

The Focal Point

K-8 SCIENCE

ANGELA ROWE-JACKSON, MANAGER

M.A.D. Scientists at Work
Masters of 5E with **Ambition** and **Determination**

Alcy Elementary & St. Jude STEMM Partnership

During the first semester of the 2023-2024 school year, some very special students at Alcy Elementary had the opportunity to participate in the St. Jude STEMM (Science, Technology, Engineering, Math, and Medicine) Afterschool Program. The St. Jude STEMM program "aims to increase diversity of the biomedical workforce by addressing inequities in K-12 STEMM education." ([St. Jude Cancer Education and Outreach Program](#))

[Click here](#) to view a video recap of their amazing experiences!



St. Jude After School STEMM club Special thanks to the leadership teams of The New Alcy Elementary School and St. Jude STEMM Afterschool Club, parents and students for participating during the fall of 2023-2024 school year. We look forward to continued growth of the learning for the students of The New Alcy Elementary School.	
<ul style="list-style-type: none"> •Draw Scientist, •What is St. Jude /Cancer, •Lab Coats, •Exit Tickets, 	L5: Build Day 1 <ul style="list-style-type: none"> •Test, •Refine, •Exit Tickets,
L1: Part 1—Running Pains <ul style="list-style-type: none"> •X-ray, •Bone biopsy, •Exit Tickets, 	L6: Build Day 2 <ul style="list-style-type: none"> •Test, •Refine, •Exit Tickets,
L2: Part 2—The Diagnosis <ul style="list-style-type: none"> •PET Scan, •Prosthetics, •Exit Tickets, 	L7: Build Day 3 <ul style="list-style-type: none"> •Test, •Refine, •Exit Tickets,
L3: Materials Exploration <ul style="list-style-type: none"> •Parts of the hand, •Materials, •Exit Tickets, 	L8: Prosthetic Presentations <ul style="list-style-type: none"> •Exit Tickets,
L4: Prosthetic Design Plan <ul style="list-style-type: none"> •Exit Tickets, 	Presentations <ul style="list-style-type: none"> Exit Tickets,

Together, We are ONE in SCIENCE!

HIGH SCHOOL

DR. WILLIAM KINARD III, MANAGER

Submitted by: Ashley Grandberry, HS ELA Coach

Create Mental Images

Another great strategy for vocabulary and reading comprehension is mental imagery. This technique shouldn't take longer than five minutes. You can have students create a mental picture of the text. When using the mental imagery strategy, choose a very descriptive text. Then read a few sentences, pause, and share your thinking by "drawing" a mental image of the sentences. Be sure to incorporate all senses ("I see...", "I hear...", "I smell..."). Have students share their imaginings and note their different mental images. There are some great ELA benefits to this approach. It lends itself to Reading Standard 4 and helps activate the imagination, which is paramount to narrative writing. Using this small strategy consistently can help strengthen students' creativity.



Source: [Four Ways to Teach Vocabulary an Reading Comprehension](#)

THE IZONE 3.0 COMMITMENTS

***Your school is
my school.***

***My school is
your school.***

***Your kids are
my kids.***

***My kids are
your kids.***